

25/00481/FUL

Easemore House, 103 Easemore Road, Town Centre,
Redditch

Demolition of existing buildings and erection of a
residential development of up to 13 No. new dwellings

Recommendation: Delegate to Head of Service to grant
subject to completion of S106 Agreement and
conditions

Site Location Plan



Existing woodland area along northern and western boundaries to be retained where possible

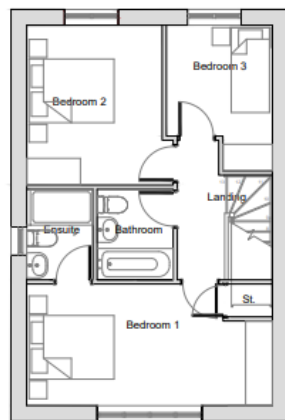
Existing boundary trees retained where possible and supplemented by new planting
New site access junction

Site Layout Plan



House Type A

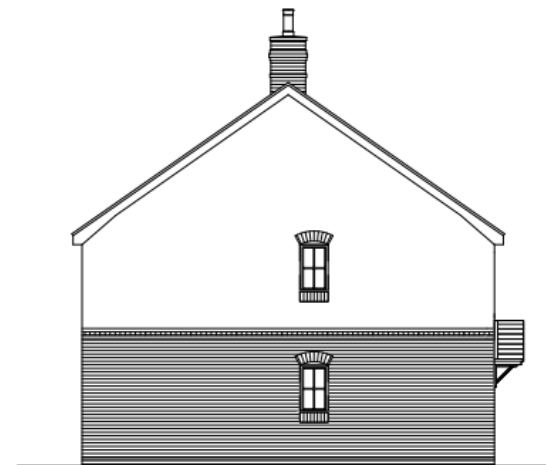
Plots 8
and 11



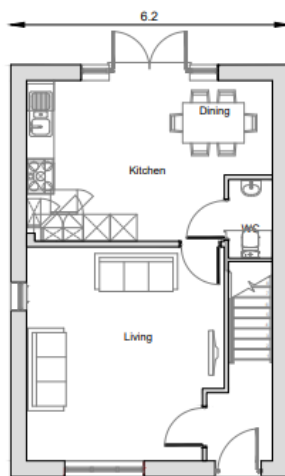
FIRST FLOOR PLAN



FRONT ELEVATION



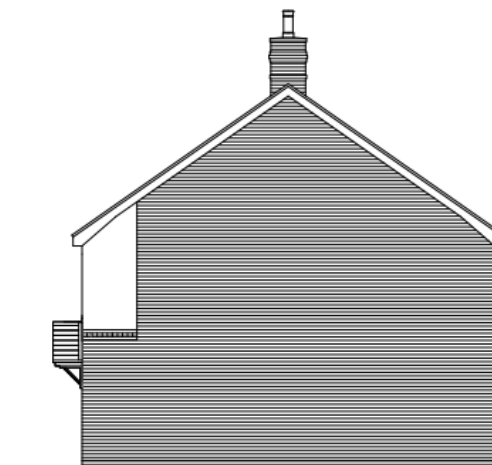
SIDE ELEVATION



GROUND FLOOR PLAN



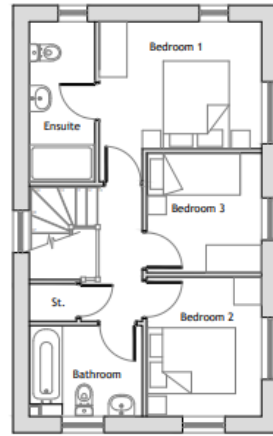
REAR ELEVATION



SIDE ELEVATION

House Type B

Plot 7



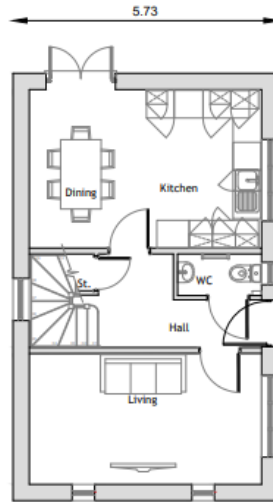
FIRST FLOOR PLAN



FRONT ELEVATION



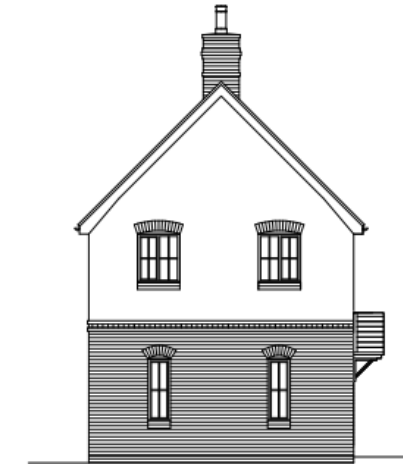
SIDE ELEVATION



GROUND FLOOR PLAN



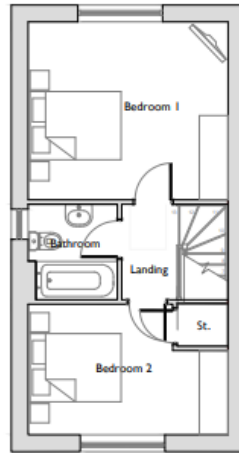
REAR ELEVATION



SIDE ELEVATION

House Type C

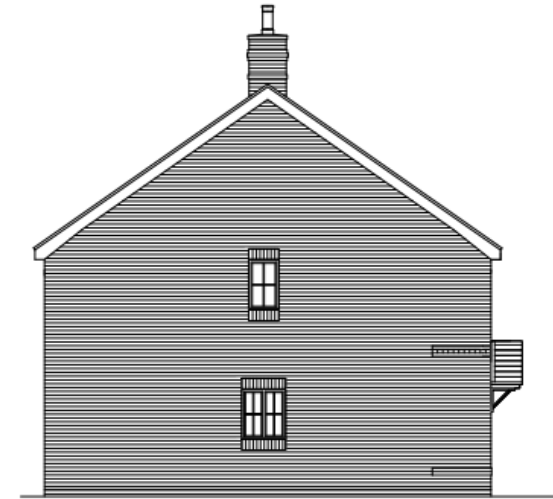
Plots 9
and 10



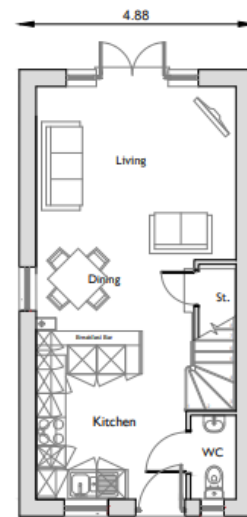
FIRST FLOOR PLAN



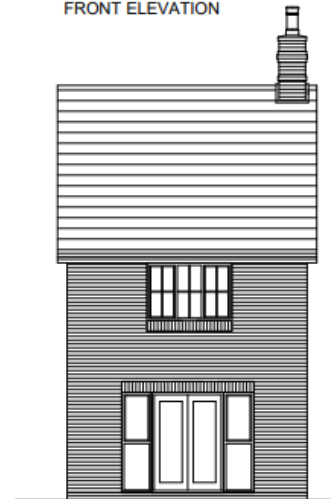
FRONT ELEVATION



SIDE ELEVATION



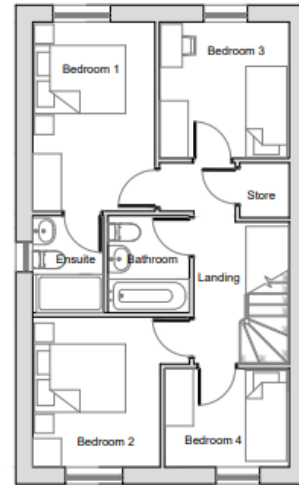
GROUND FLOOR PLAN



REAR ELEVATION

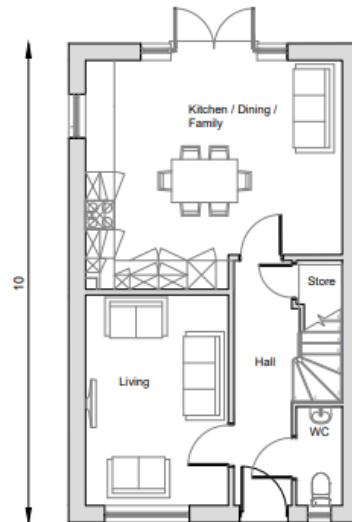
House Type D

Plots
1- 6



FIRST FLOOR PLAN

6.07



GROUND FLOOR PLAN



FRONT ELEVATION



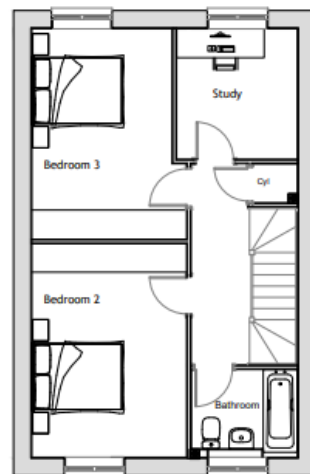
SIDE ELEVATION



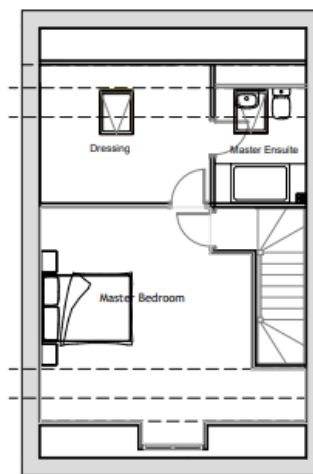
REAR ELEVATION

House Type E

Plots
12-13



FIRST FLOOR PLAN



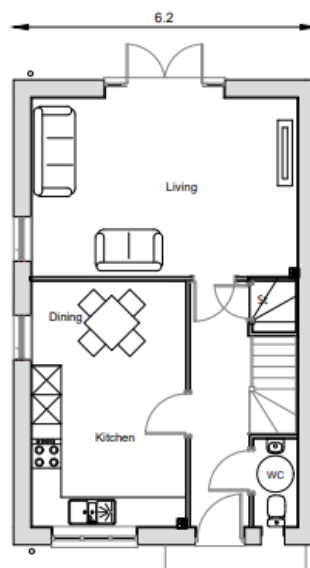
SECOND FLOOR PLAN



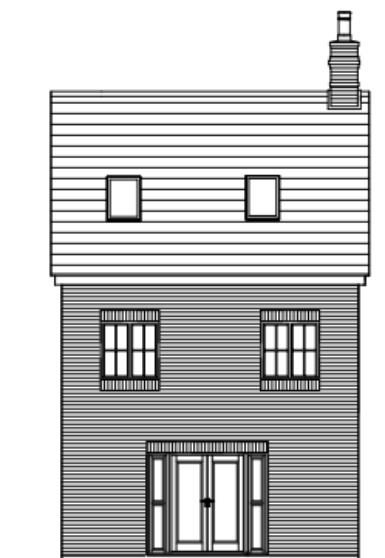
FRONT ELEVATION



SIDE ELEVATION



GROUND FLOOR PLAN



REAR ELEVATION



Proposed Street Scenes

